

LABCATAL®

The **POWER** to prevent Otitis, sinusitis
and other recurring infections.

Individual predispositions can trigger an increased susceptibility to infections of the ENT sphere. Even though these are rather benign, treatment remains difficult and the growing resistance to antibiotics amplifies the need for a complementary treatment.

The efficacy of Oligosol® Manganese-Copper and Copper-Gold-Silver, which are manufactured by the pharmaceutical laboratory **LABCATAL**, has been proven in many clinical studies. In children and adults, they reduce the intensity and recurrence of infections along with its associated tiredness as well as limit the need for antibiotics.

LABCATAL

The reference and world leader
in trace elements.

Recommended by health professionals
worldwide for more than
50 years.



For more information on **LABCATAL's** Oligosol® line,
call Heel Canada toll free at 1-888-879-4335 or (514) 353-4335
or visit our website at www.heel.ca

LABCATAL®

-Heel®
Heel Canada Inc.

EquifemTM Balance



60 caps (1 month) / 180 caps (3 months)

A safe alternative

INDICATION: to address menopausal symptoms such as hot flushes, night sweats, etc.

ACTIVE INGREDIENTS (per capsule): 50 mg soy extract (*Glycine max*) non genetically modified providing 20 mg of isoflavones. Contains no colouring agents and is completely vegetarian.

MODE OF ACTION: phytoestrogens, which include isoflavones, are a broad group of non-steroidal plant-derived compounds that are weakly estrogenic. Their structure (similar to synthetic estrogens) allows them to bind to cellular estrogen receptors α and β . Phytoestrogens have an impact on these receptors but not as strongly as real estrogens. Where necessary, they block or stimulate estrogen receptors. Isoflavones are therefore known as estrogen agonists and antagonists. This is why phytoestrogens are said to act as natural selective estrogen receptor modulators (SERMs).

THERAPEUTIC USE: a considerable amount of scientific studies have demonstrated the beneficial effects of isoflavones. Isoflavones seem to be effective in:

- the treatment of vasomotor symptoms of menopause (hot flushes, night sweats, etc.);
- the prevention of cardiovascular diseases by improving the cholesterol profile;
- the prevention of osteoporosis in reducing bone density loss and increasing bone mineral content.

SUGGESTED USE: 2 capsules per day, one in the morning and one in the evening. Increase to 3 capsules per day if necessary. There is insufficient data on the safety of dosages exceeding 100 mg of isoflavones per day (5 capsules). It is recommended that **Equifem-Balance** be taken at least 2-3 times throughout the day rather than as a single dose in order to maintain a steady concentration of soy isoflavones in the blood.

OTHER ALTERNATIVE PRODUCTS FOR HIGH RISK CANCER PATIENTS:

Klimakt-Heel, Manganese-Cobalt Oligosol.



FIDES

A sister co. of Heel[®]

1-888-879-4335
www.heel.ca

EquifemTM Mood



60 caps (1 month)

Address emotional instability at all ages...

INDICATION: to improve general well-being and mood. Reduces symptoms associated with menopause and premenstrual syndrome (PMS) such as nervousness and irritability.

ACTIVE INGREDIENTS (per capsule): glutamic acid (hydrochloride) 50 mg, pyridoxine hydrochloride (vitamin B6) 50 mg, black cohosh (*Cimicifuga racemosa*) root powder 30 mg, white Korean ginseng (*Panax ginseng radix*) root (P.E.1:10) 20 mg, folic acid 0.33 mg. Contains no colouring agents, is GMO free and completely vegetarian.

GLUTAMIC ACID helps the body maintain the correct acid-alkaline balance. It plays an important role in the modulation of the hypothalamus-pituitary-adrenal axis (the stress axis). Glutamine is also a precursor of gamma-aminobutyric acid (GABA), a neurotransmitter in the brain, which is needed for proper mental activity and regulates moodiness, irritability, anxiety, insomnia and depression.

VITAMIN B6 is involved in a wide variety of metabolic reactions. These reactions include transamination of amino acids, conversion of tryptophan to niacin and the synthesis of GABA, serotonin, norepinephrine and dopamine. These neurotransmitters are implicated in the regulation of humor, sleep pattern, depression, anxiety and general behavior. The increase in estrogen levels during PMS leads to an increased tryptophan metabolism which results in a higher need in vitamin B6.

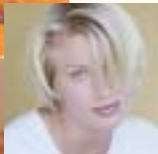
BLACK COHOSH relieves menopausal symptoms by suppressing the secretion of luteinizing hormone (LH). Sudden bursts of LH cause hot flashes, heart palpitations, headaches and thinning of the vaginal lining. In a randomized study, black cohosh reduced psychological menopausal symptoms by 70% after 6 months of treatment.

WHITE KOREAN GINSENG: the constituents of ginseng thought to be of most importance are triterpenoid saponins referred to as ginsenosides. There is some evidence that they may work against nervousness by affecting the stress axis. The saponins seem to decrease serum cortisol concentration, stimulate adrenal function and increase dehydroepiandrosterone sulfate (DHEA-S) in women. In periods of stress, such as anxiety in menopause, the lowered DHEA-S levels seem to be responsible for the psychological symptoms.

FOLIC ACID helps produce neurotransmitters such as serotonin and dopamine. Folate in food is about 40% less bioavailable than synthetic folic acid which is almost 100% bioavailable. Folate deficiency is associated with a high frequency of irritability, forgetfulness and often hostility. Correcting folic acid deficiency has reversed psychological symptoms such as depression.

SUGGESTED USE: 2 capsules per day with meals, one in the morning and one in the evening. Increase to 3 capsules per day if necessary. **Equifem-Mood** is best taken with food and not on an empty stomach.

OTHER ALTERNATIVE PRODUCTS FOR HIGH RISK CANCER PATIENTS: Nereel.



IF FIDES

A sister co. of Heel[®]

1-888-879-4335
www.heel.ca

ARTHROBASE PLUS®

Supports JOINT FUNCTION & Preserves JOINT STRUCTURE

Glucosamine and chondroitin sulfate are part of the glycosaminoglycans present in the mesodermal structures: connective tissue, bone, cartilage and the surrounding matrix. Formulated without artificial colours, flavours, preservatives, lactose, sugar, starch, wheat or yeast, ARTHROBASE PLUS® is manufactured according to Good Manufacturing Practice guidelines (GMPs). Many studies have shown that glucosamine and chondroitin sulfate have substantial effects on symptom relief in osteoarthritis with fewer side effects than traditional medicine used to treat this condition.

Arthritis & Arthrosis Protocol

Weeks 1 and 2

- **Traumeel tablets:** 1 tablet 3-5 times a day
- **Zeel tablets:** 1 tablet 3-5 times a day
- **Traumeel ointment:** Apply locally 2-5 times a day
- **ARTHROBASE PLUS®:** See recommended dosage corresponding to stage of evolution

Weeks 3-4-5

- **Zeel ointment:** Apply locally 3-5 times a day
- **Zeel tablets:** 1 tablet 3-5 times a day
- **ARTHROBASE PLUS®:** See recommended dosage corresponding to stage of evolution

Complaints of the patient (related to the evolution of the arthrosis)

- **Stage I:** The patient has some problems especially during a charged movement (e.g. a long walk with a shoulder bag).
- **Stage II:** The mobility of the joint decreases because of the pain at the beginning of the movement.
- **Stage III:** The mobility of the joint decreases significantly. There is a lot of secondary inflammations especially after a period of overcharge.
- **Stage IV:** The joint is stiff, immobile. One can observe muscular compensation. The joint becomes malformed, which can influence the position of the limbs.

Recommended dosage of ARTHROBASE PLUS® (arthrosis)

- **Stage I:** 2 tablets of ARTHROBASE PLUS® per day
- **Stage II:** 3 tablets of ARTHROBASE PLUS® per day
- **Stage III:** 4 tablets of ARTHROBASE PLUS® per day
- **Stage IV:** 4 tablets of ARTHROBASE PLUS® per day

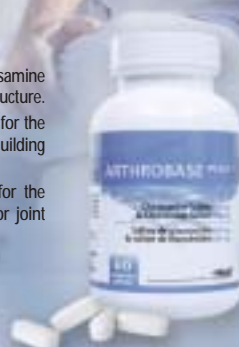
ARTHROBASE PLUS® is an established dietary supplement of glucosamine and chondroitin sulfate which supports joint function and preserves joint structure.

The naturally occurring compound glucosamine is an initial substance vital for the body's synthesis of connective tissue. Chondroitin sulfate is an advanced building block which the body can directly incorporate, without prior modification.

A sufficient supply of glucosamine and chondroitin sulfate is required for the production and for continuous renewal of connective tissue important for joint cartilage, bones and the surrounding matrix.

Suggested use:

Adults: In general, take one capsule three times daily or use as directed by a health professional.



60

capsules

Each capsule contains: **Glucosamine Sulfate 500 mg**
(HCl & Potassium sulfate)
& **Chondroitin Sulfate 400 mg**

-Heel®

1-888-879-4335 • www.heel.ca